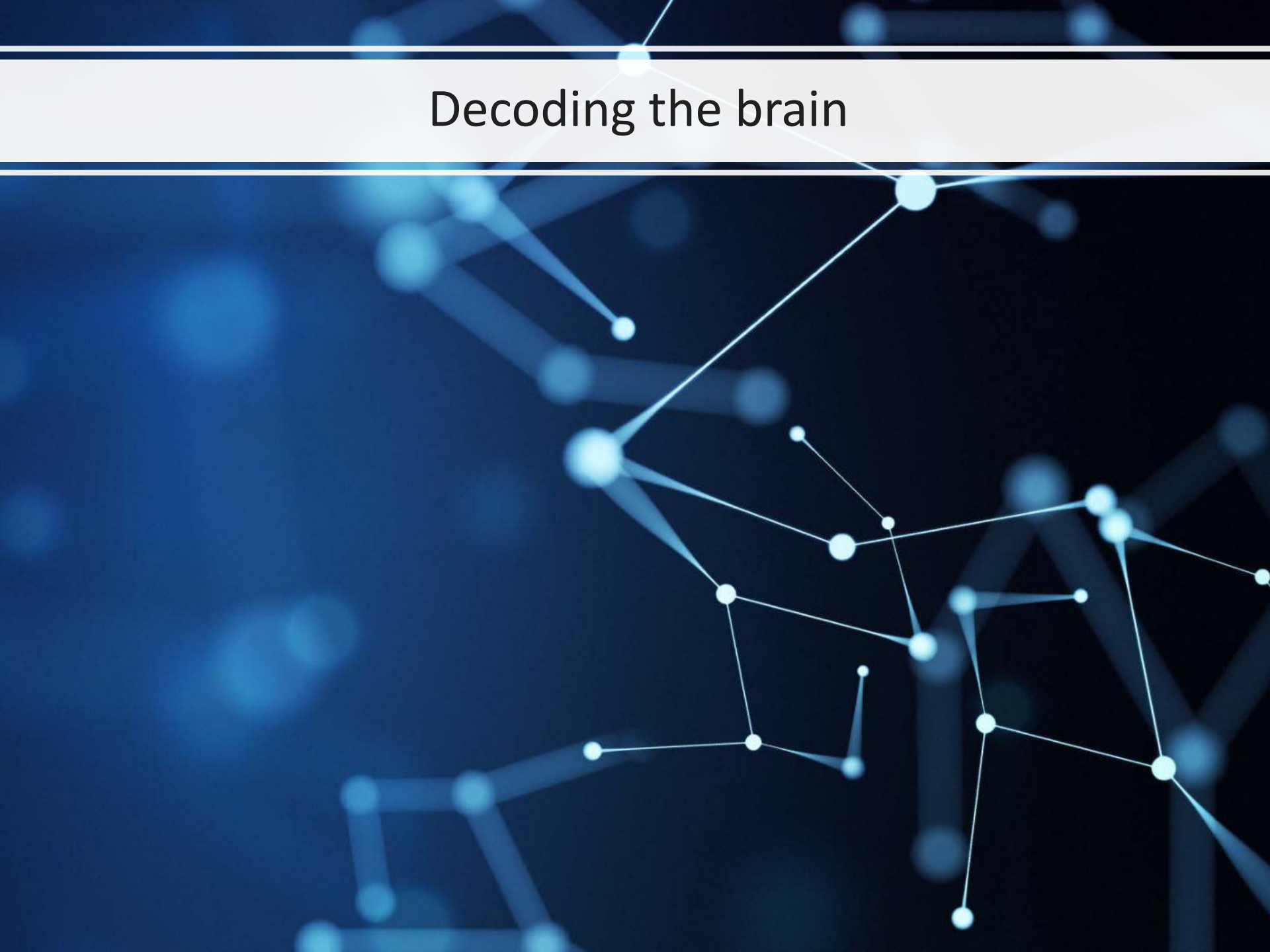


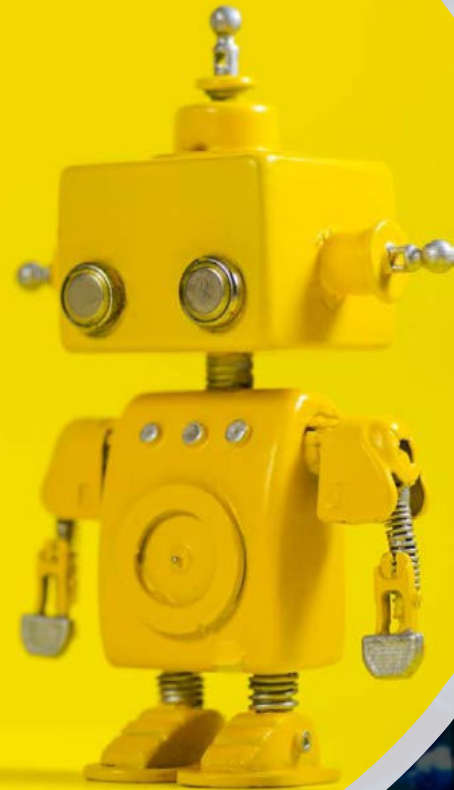


Breaking into the Transition with Brain- controlled Home Automation

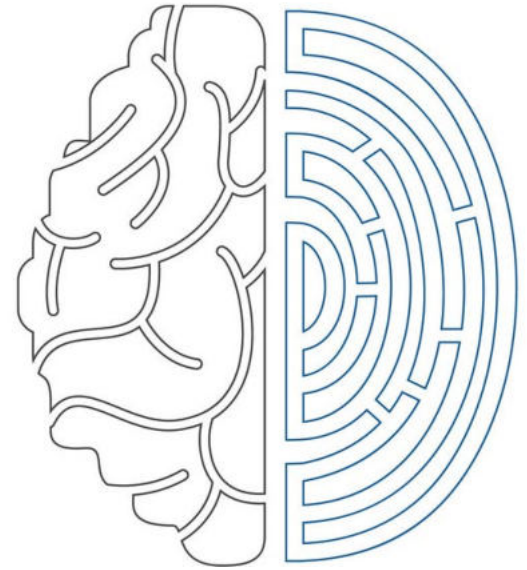
Decoding the brain



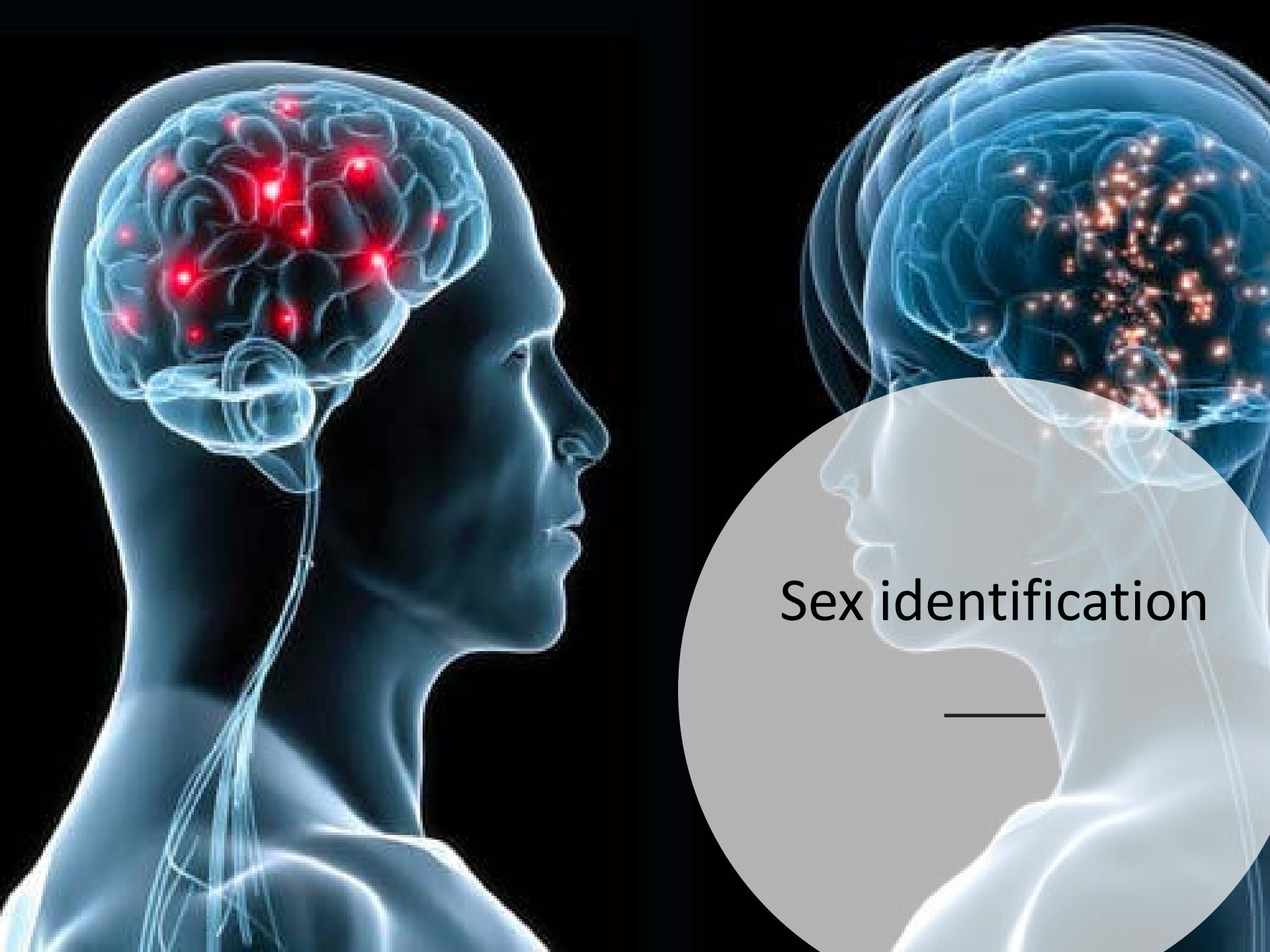
Artificial intelligence & Microelectronics





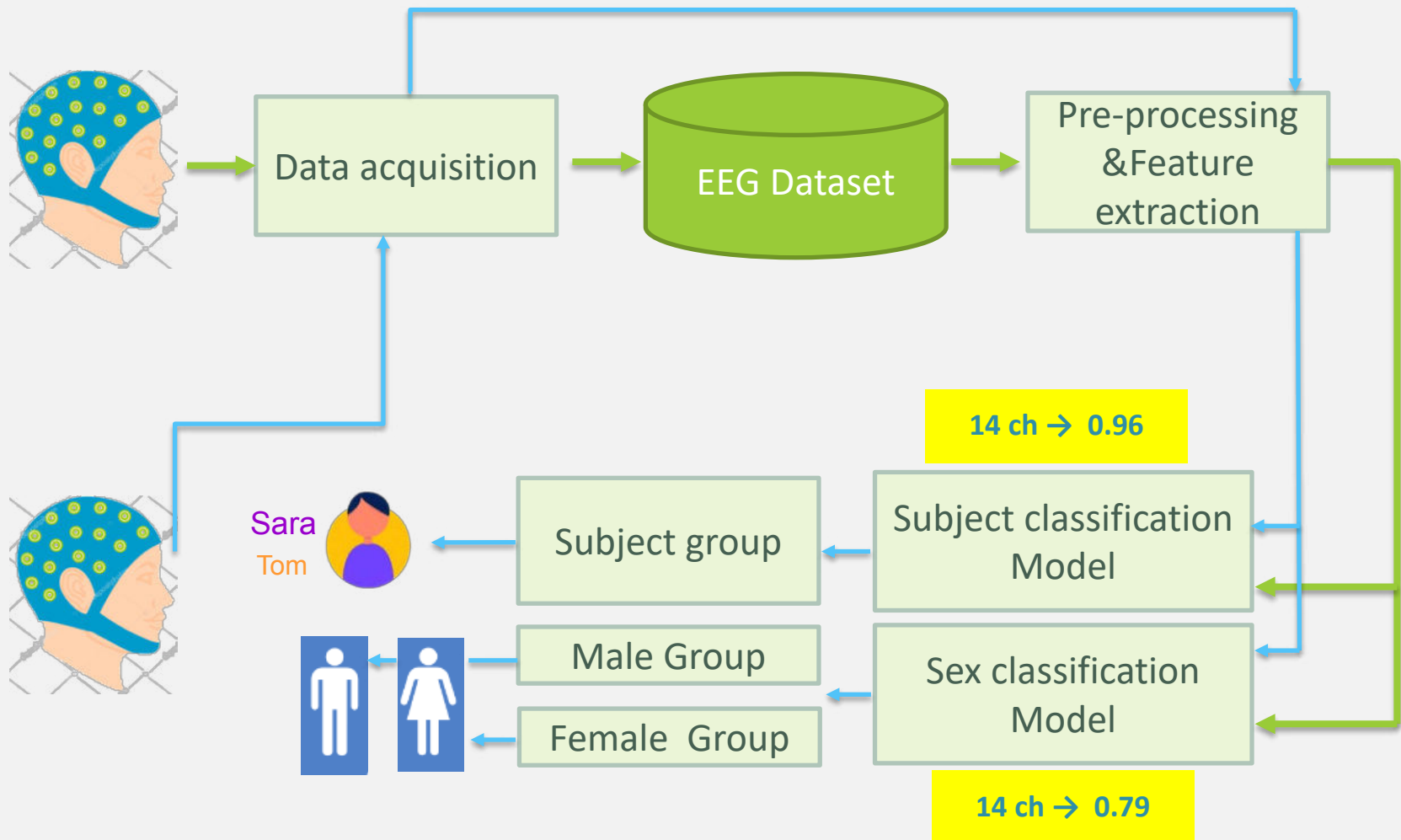


Subject Identification
From fingerprints to brainprints

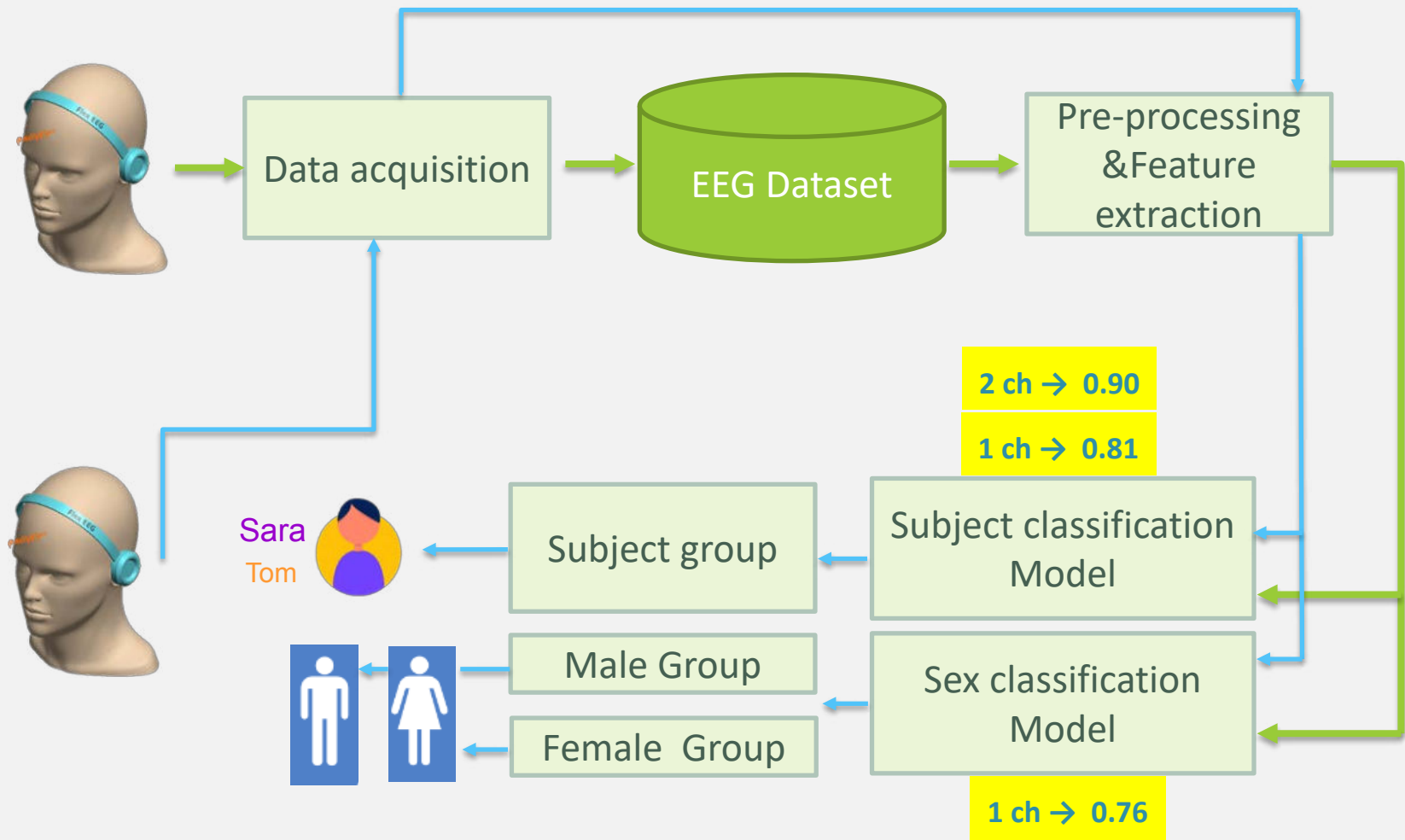


Sex identification

Subject and Sex Identification



Channel Reduction





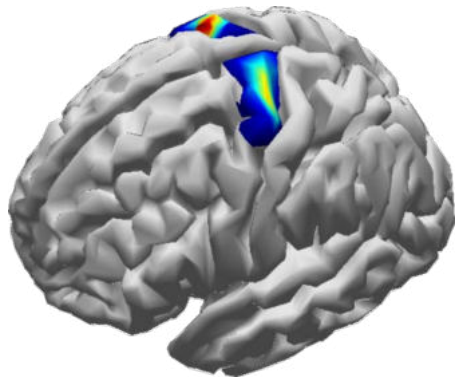
Lie Detector

<https://www.ntnu.no/ansatte/marta.molinas>

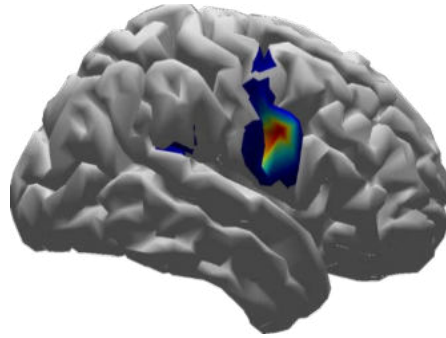


Alcohol detector

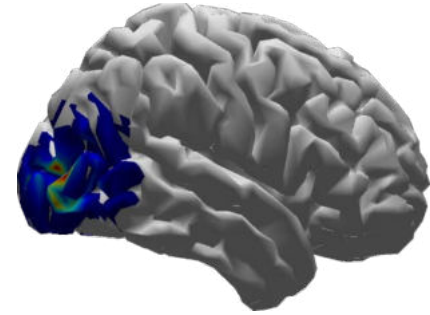




Motor Activity

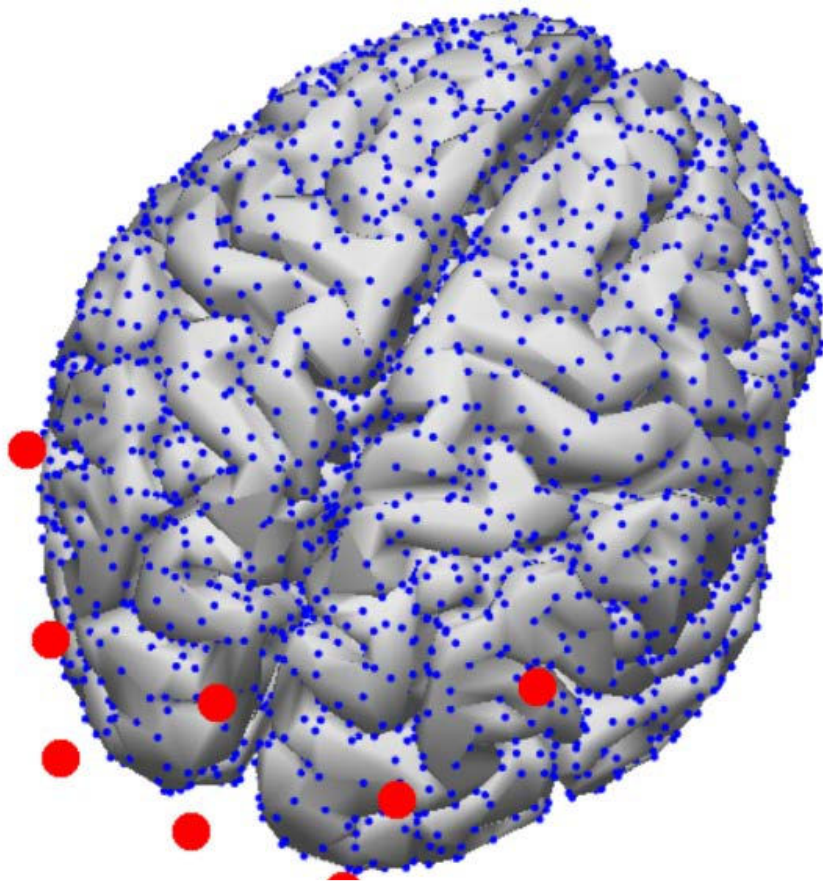


Auditory
Activity

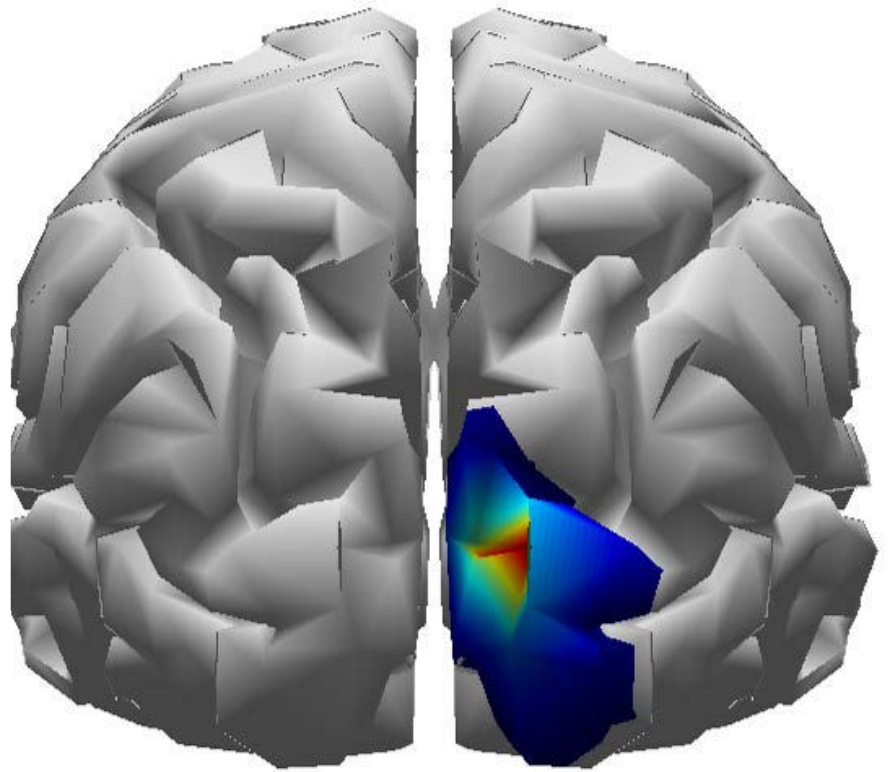


Visual Activity

Brain Mapping/Neuroimaging



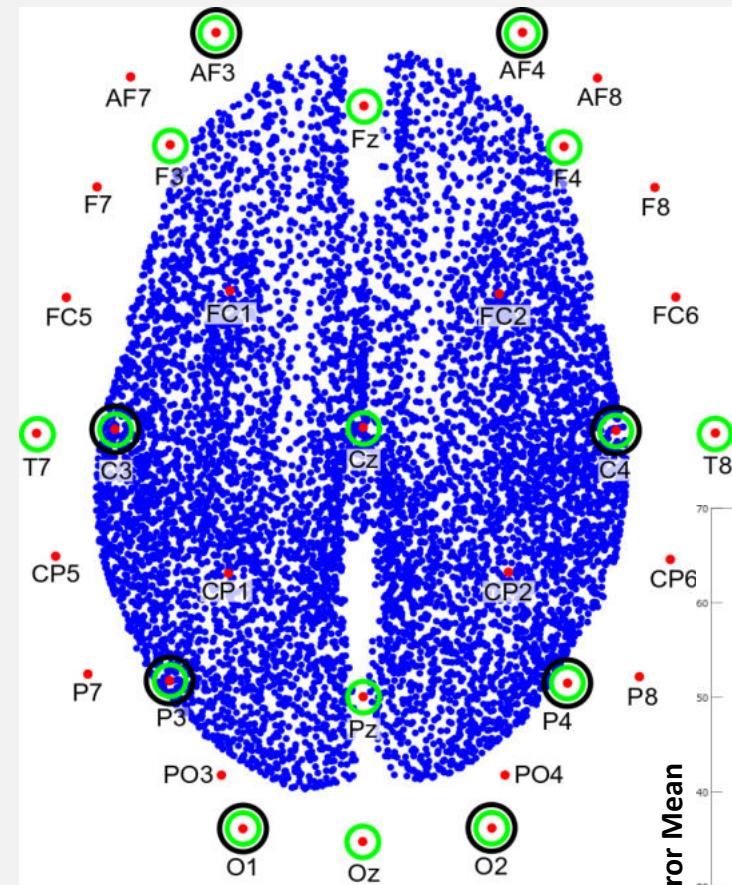
Brain Model & Electrodes
around Visual Cortex



Reconstructed Activity
in the Visual Cortex

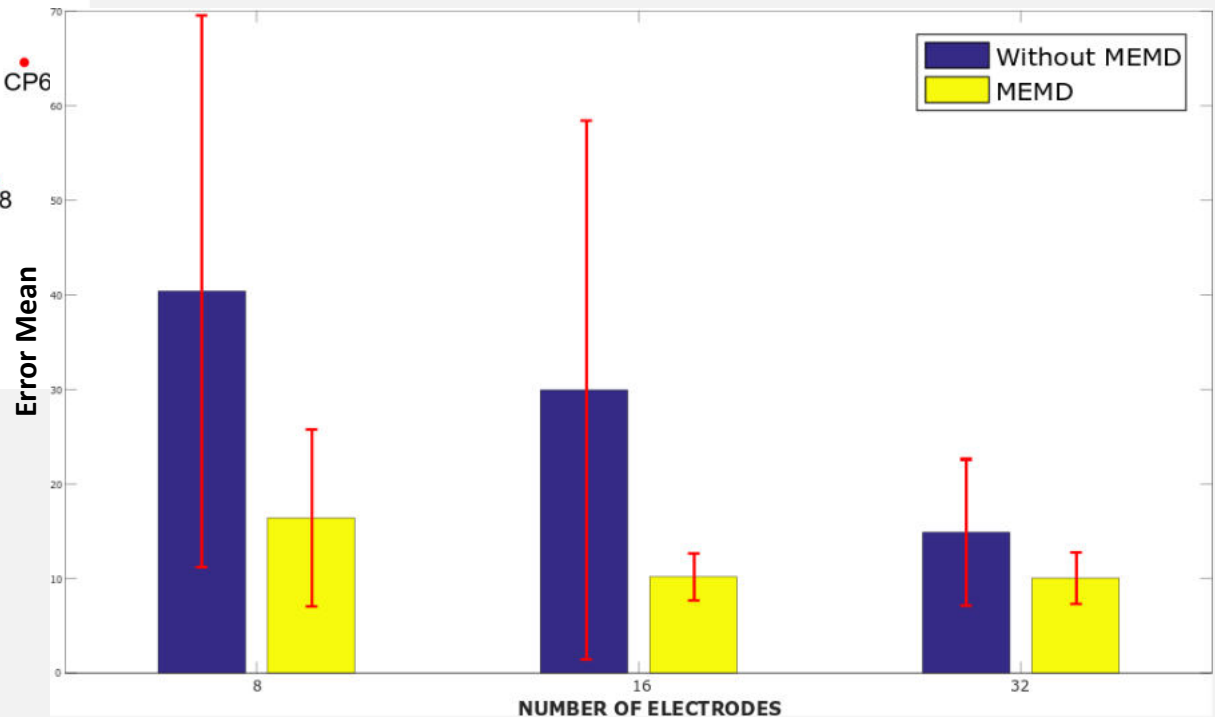
Mapping the Occipital Lobe using visual
stimuli data and local electrodes

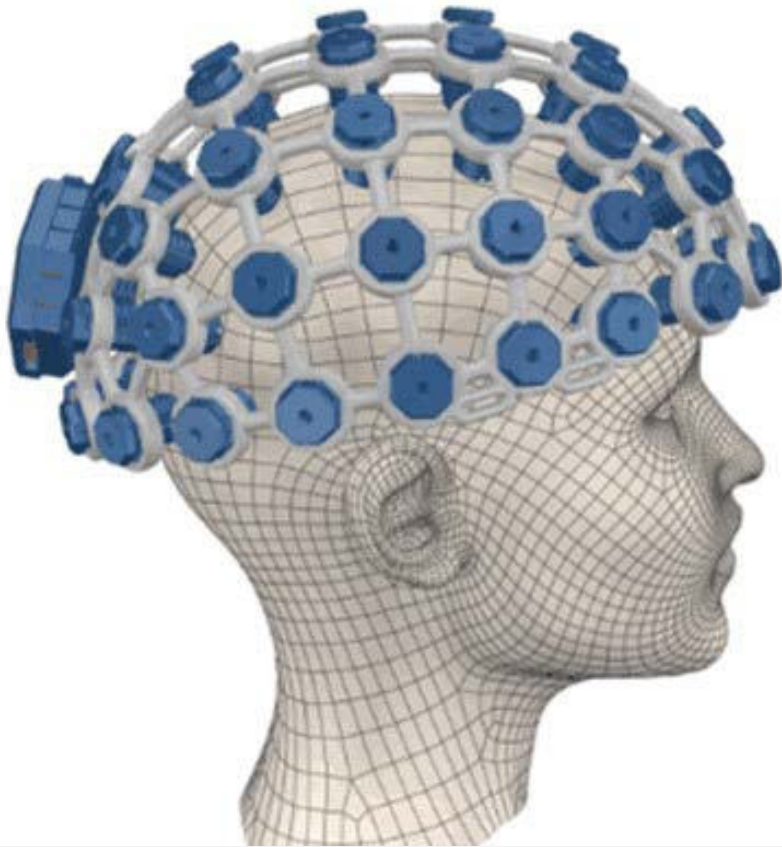
Brain model-based electrode reduction



- 8196 Sources
- 32 Reduced Electrodes
- 16 Reduced Electrodes
- 8 Reduced Electrodes

Error Mean and Standard Deviation

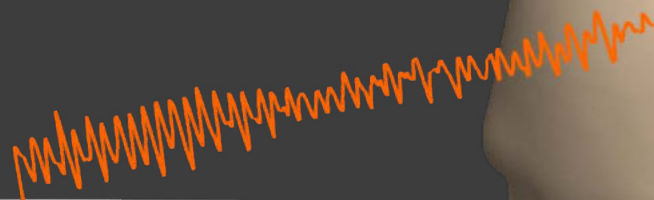
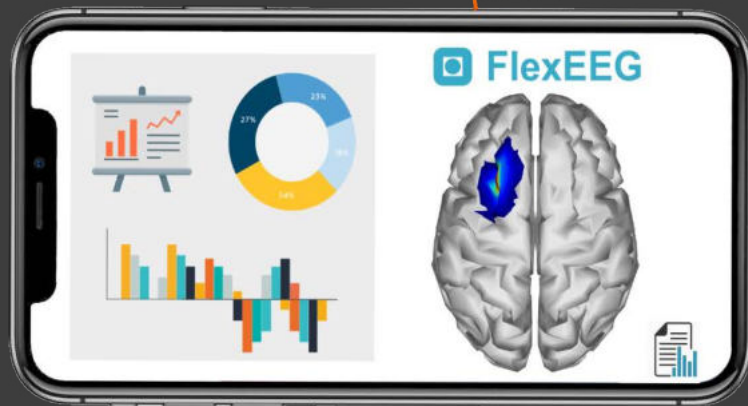




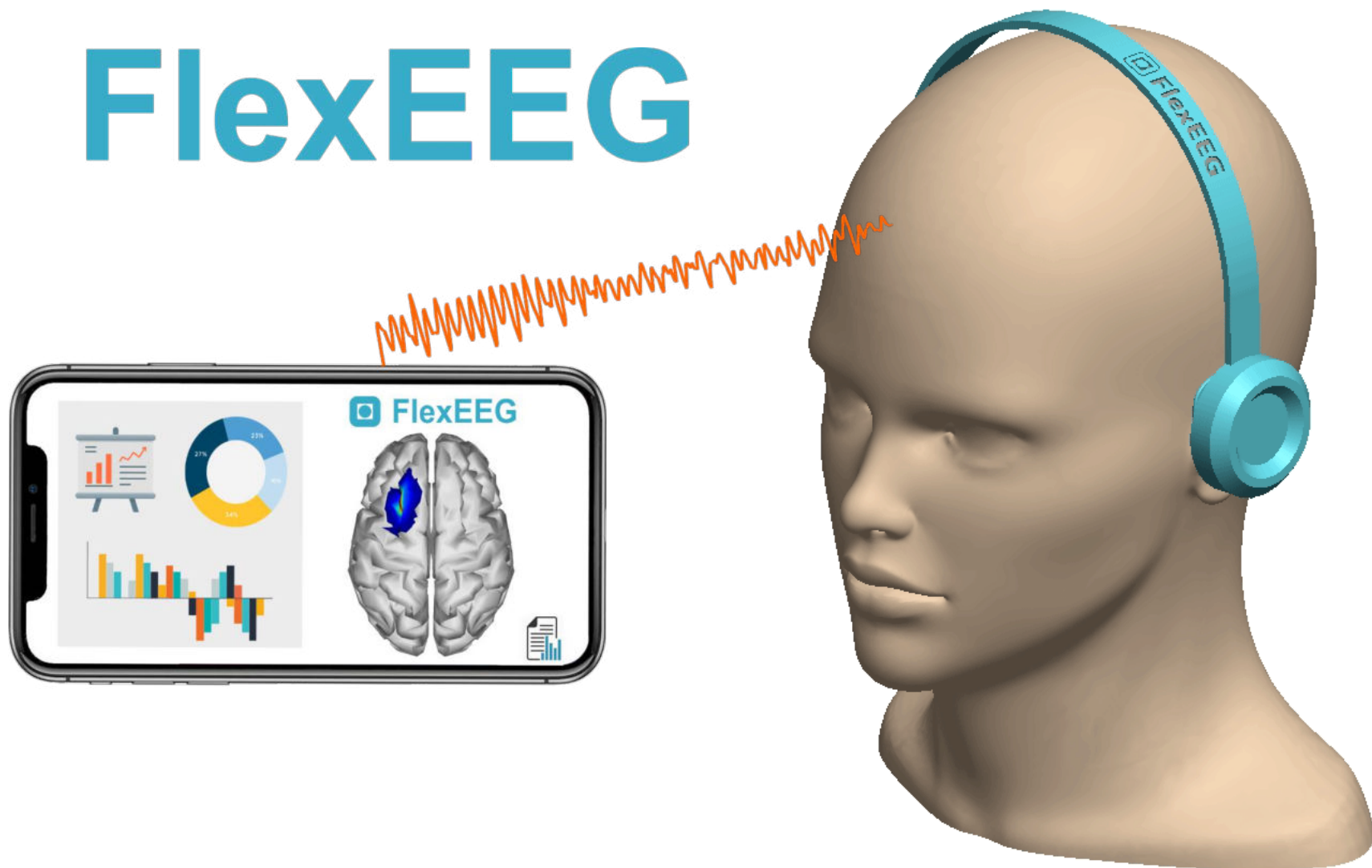
David & Goliath

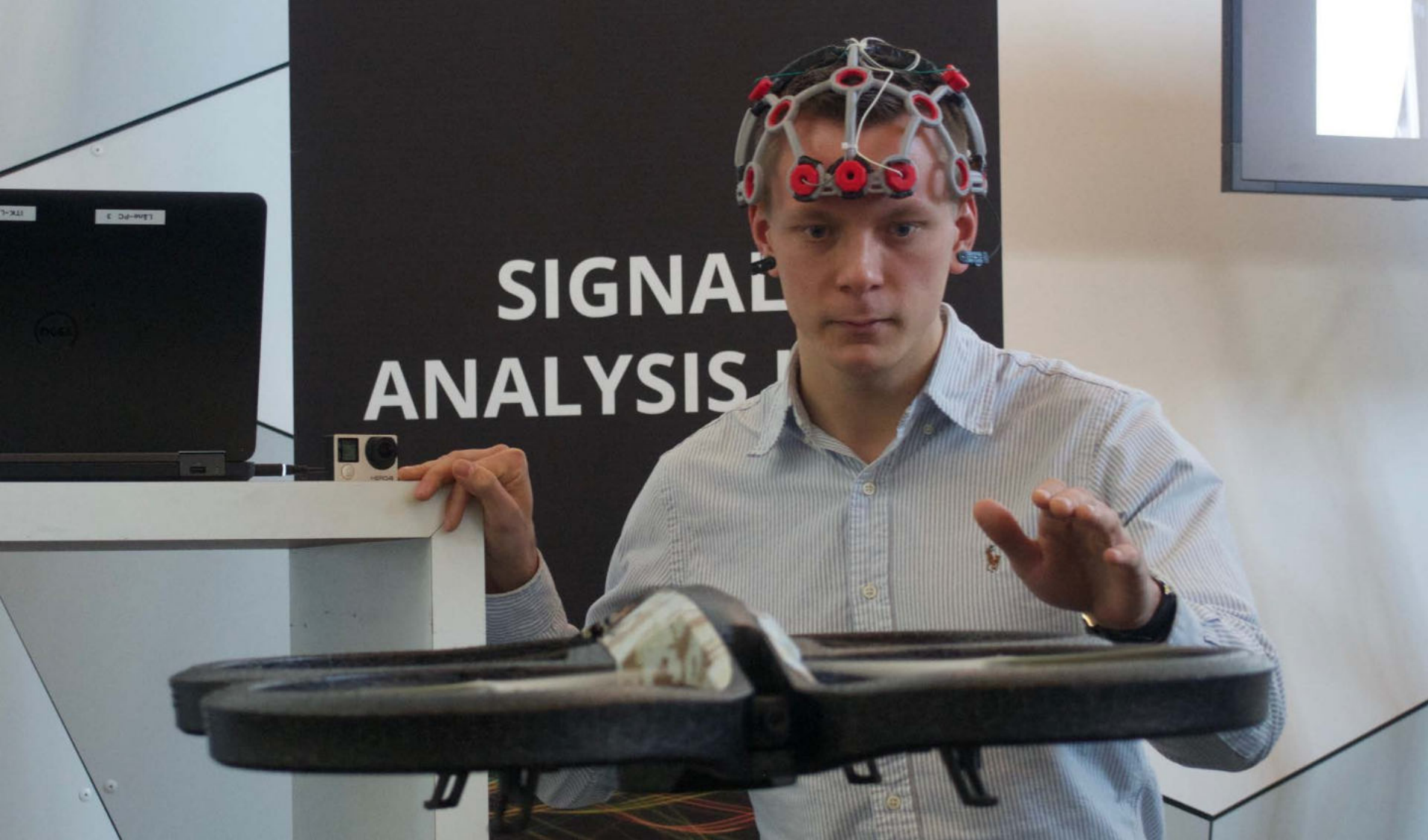
FlexEEG

FlexEEG

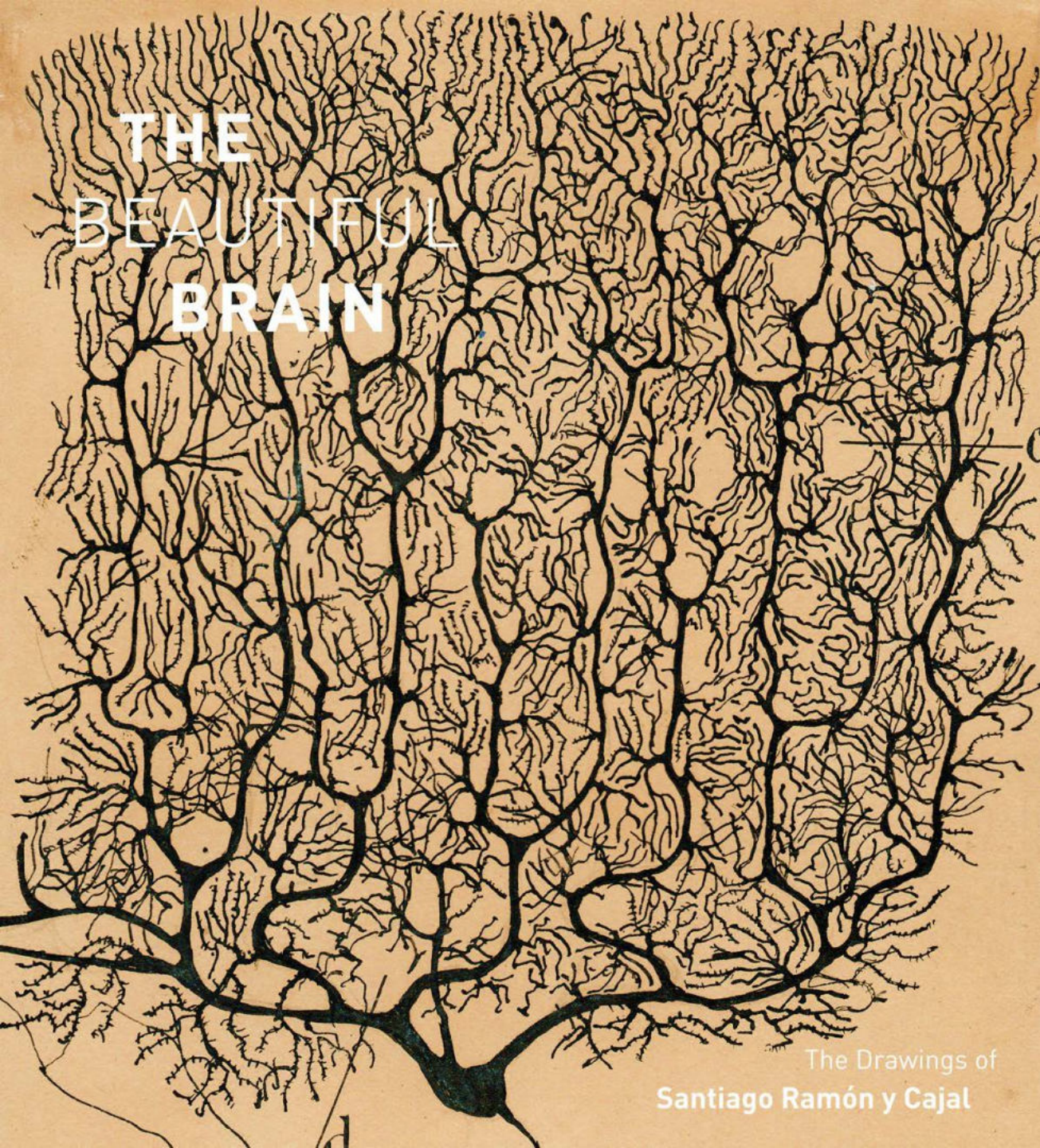


FlexEEG





Flying a drone



THE BEAUTIFUL BRAIN

"Every man can,
if he so desires,
become the sculptor
of his own brain"

Ramon y Cajal

The Drawings of
Santiago Ramón y Cajal

"The reasonable man adapts himself to the world: the unreasonable one persists in trying to adapt the world to himself. Therefore all progress depends on the unreasonable man. "

- George Bernard Shaw